

Accessing CQUniversity Roam using Windows Vista or Windows 7

Instructions to access CQUniversity Roam	p. 1
Hints and Tips	p. 3
Assistance with CQUniversity Roam	p. 3

Please be aware that as CQUniversity does not currently support **Windows Vista** the following instructions on how to connect to CQUniversity Roam may not be suitable in all circumstances.

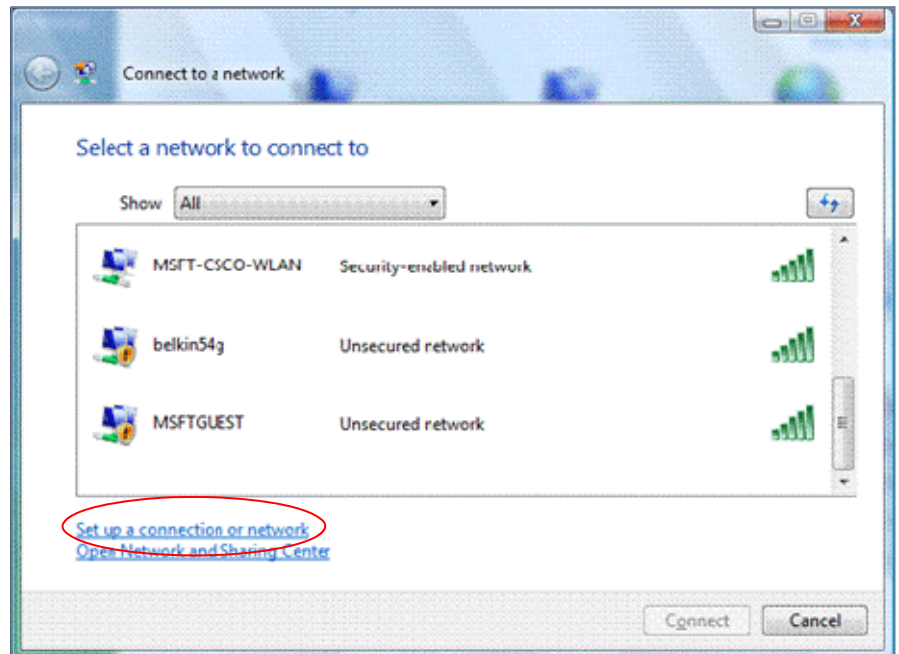
Instructions

1. Open the **"Connect to a network"** window.

This is located by selecting the **"Start"** menu and clicking the **"Connect to"** option.

2. Select **"Set up a connection or network"** (pictured right).

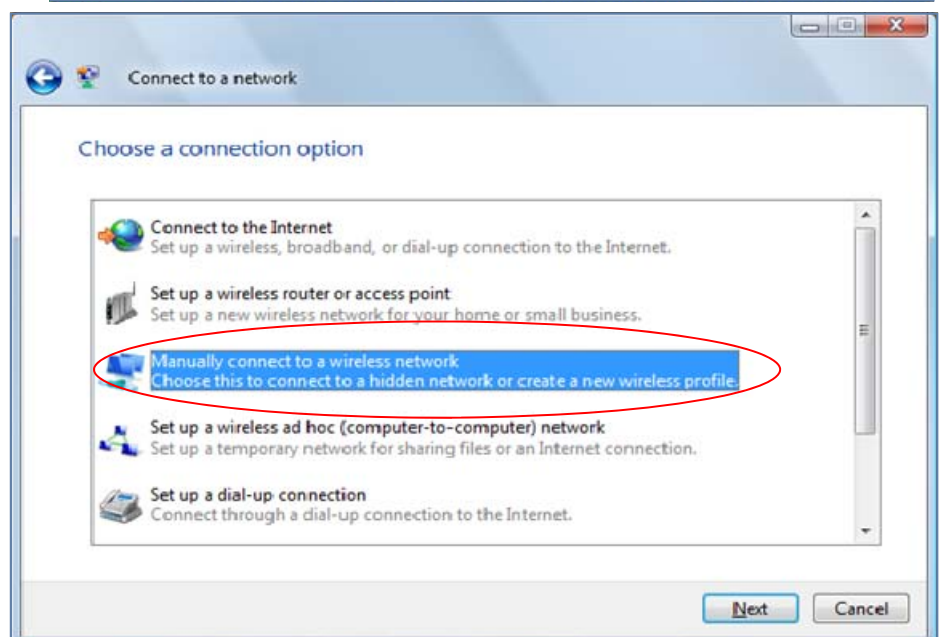
*Note: For students and staff using a laptop with Windows 7, select **"Network & Sharing Centre"** then click **"Set up a new connection or network"**.*



3. A **"Connect to a network"** window will open.

Select the third option **"Manually connect to a wireless network"**.

Click **"Next"**.



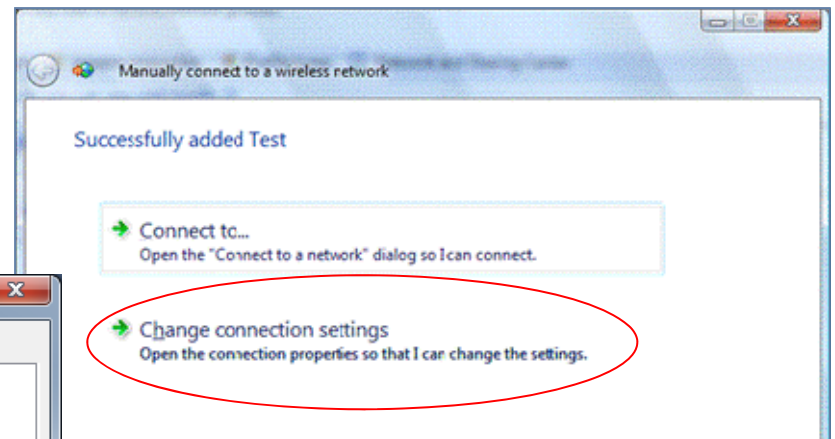
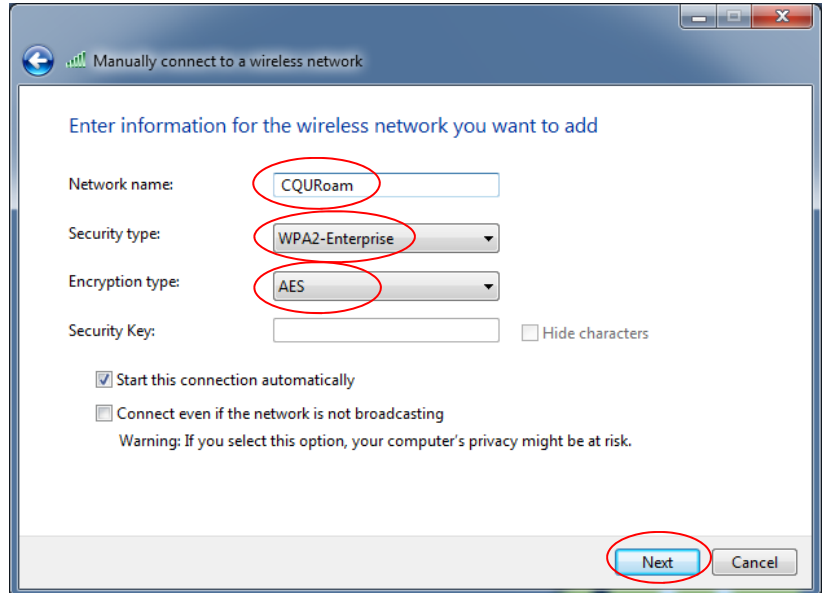
CQUniversity Roam using Windows Vista or 7 (continued)

4. Please enter the following information in the fields located in the **"Manually connect to a wireless network"** window (pictured right).

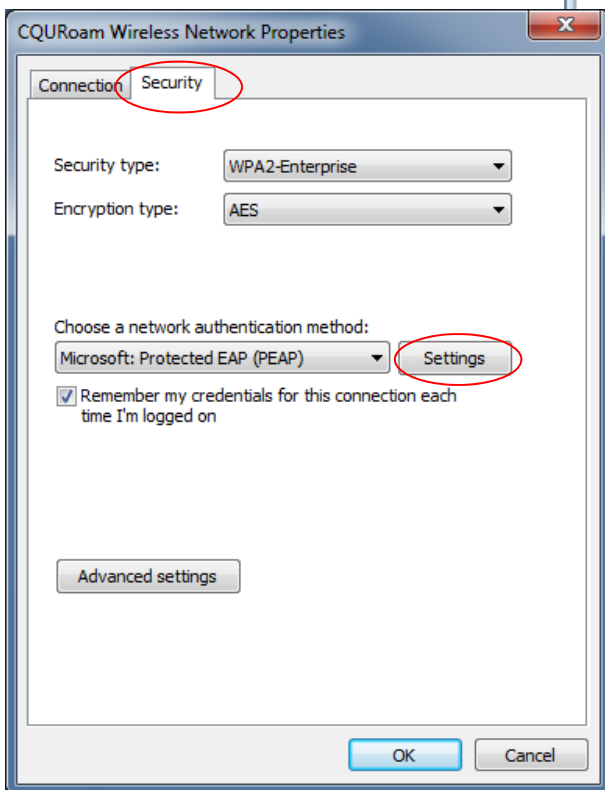
Network name: **"CQURoam"**
 Security type: **"WPA2-Enterprise"**
 Encryption type: **"AES"**

Click **"Next"**.

5. To establish the settings for CQUniversity Roam (the wireless network), click **"Change connection settings"**.



6.



6. Select the **"Security"** tab (pictured left).
7. Click the **"Settings..."** button.

CQUniversity Roam using Windows Vista or 7 (continued)

8. A "Protected EAP Properties" window will open (pictured right).

Untick "Validate server certificate".

Click "Configure".

9. Untick the "Automatically use my Windows logon name and password" option (pictured below).

10. Click "OK" until all windows are closed.

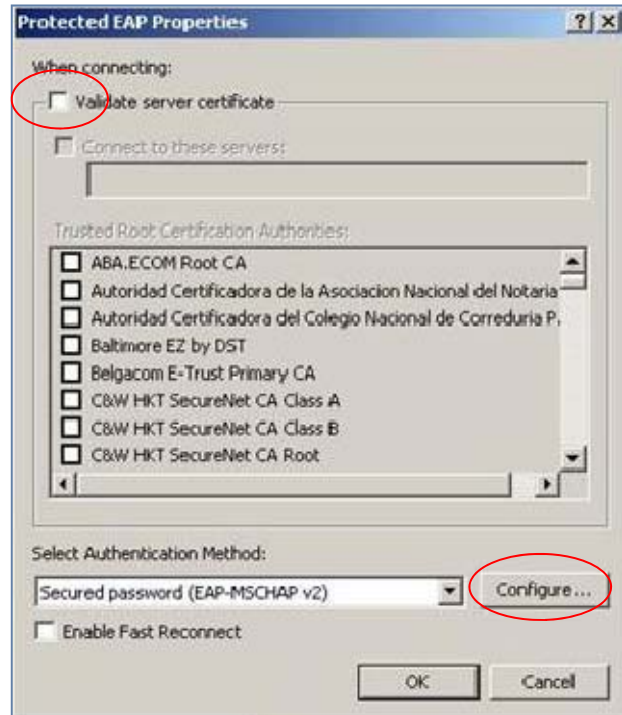
11. After a few seconds, a popup box will open at the bottom of the screen asking for more information.

Select this box and enter your staff or student username and password.
Note: A domain is not required.

12. Click "OK".

The CQUniversity Roam (wireless) connection

8.



9.



Hints and Tips

- If a popup continues to display asking for further information after you have entered your username and password, you may need to disable the Bluetooth connection. It is located in the system tray at the bottom right hand corner of the screen.

To disable the Bluetooth connection, double click on it the Bluetooth icon and select "WLAN". If that option is unavailable right click on the icon and select "Disable".

Need assistance accessing CQUniversity Roam?

Students and staff can contact the ITD Service Centre if they need any technical assistance accessing CQUniversity Roam while working on campus.

Phone: 07 4930 9233

Email: servicedesk@cqu.edu.au