

## Accessing CQUniversity Roam using Mac OS *version 10.5 or 10.6*

|   |      |
|---|------|
| Requirements for using Mac OS 10.5 or Mac OS 10.6 | p. 1 |
| Instructions to access CQUniversity Roam          | p. 1 |
| Hints and Tips                                    | p. 4 |
| Assistance with CQUniversity Roam                 | p. 4 |

### Requirements

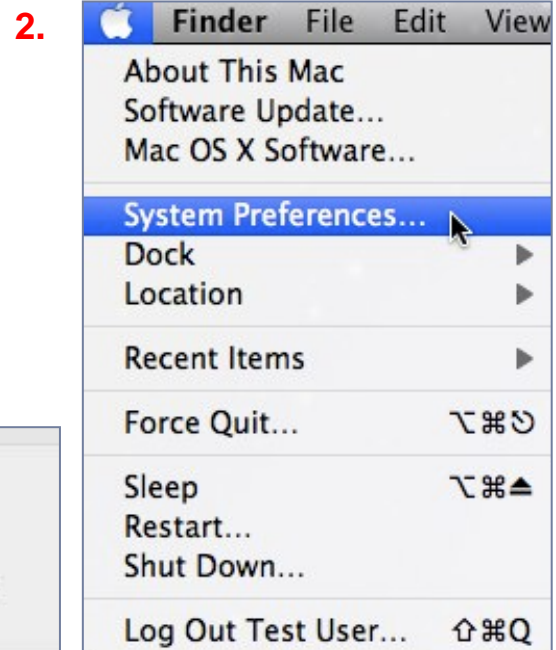
The following requirements are needed when using **Mac OS 10.5** or **Mac OS 10.6** to access CQUniversity Roam:

- Download the latest updates from the Apple website <http://support.apple.com/downloads/>
- Use a Network Airport Wireless card with the latest drivers.  
*CQUniversity Roam uses 802.11a/g/n (54meg, not the 108meg dual channel systems available on the market).*
- Ensure the IP address is configured to use dynamic IP address allocation.  
*If it is set to a fixed address it will not work.*

### Instructions

These instructions are available to assist students and staff connecting to CQUniversity Roam using a **Mac OS 10.5** or **Mac OS 10.6** laptop while working on campus.

1. Click the **"Apple"** icon in the top-left corner.
2. Select the **"System Preferences..."** option.
3. Click the **"Network"** icon (pictured below).



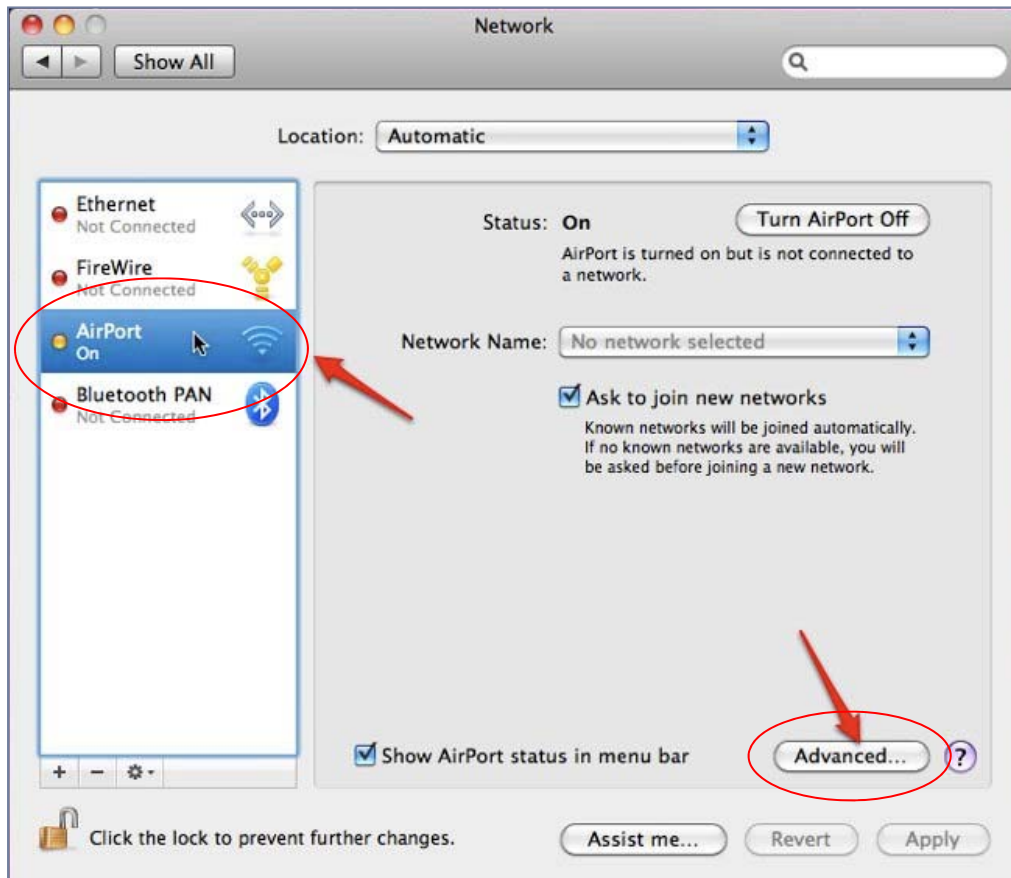
**3.**



## Accessing CQUniversity Roam using Mac OS version 10.5 or 10.6 (continued)

4. A new **“Network”** window will open.

Select the **“AirPort”** option and click the **“Advanced...”** tab (pictured below).



5. Select the **“802.1X”** tab.

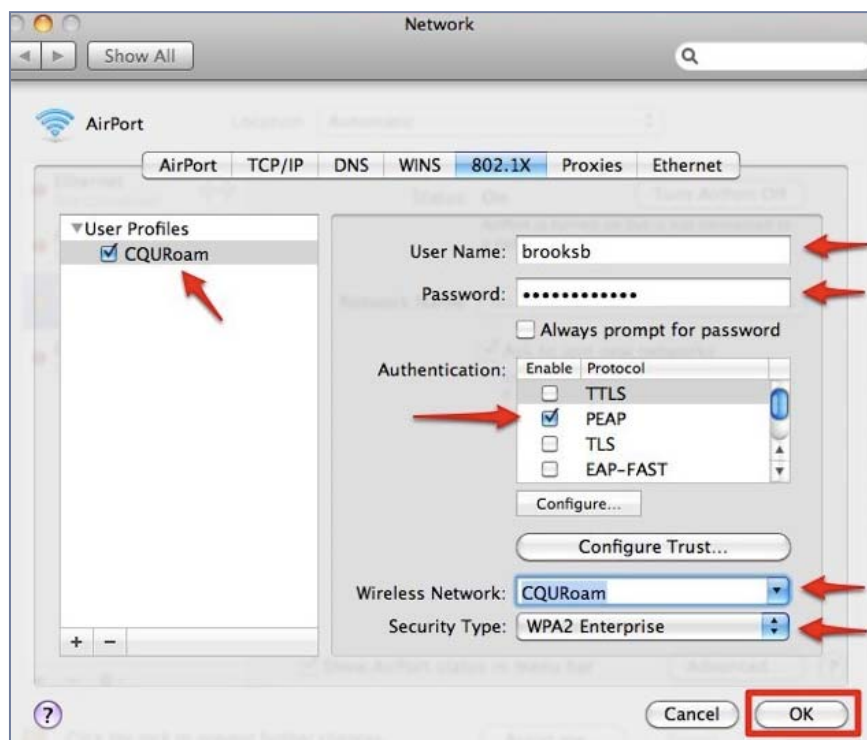
Click the plus “+” symbol on the bottom left.

A new menu will open. Select **“Add User Profile”** (pictured below).



## Accessing CQUniversity Roam using Mac OS version 10.5 or 10.6 (continued)

6. Please complete the following fields with the necessary information:
  - Enter **"CQUroam"** as the profile name
  - User Name: Enter your CQUniversity staff or student username
  - Password: Enter your CQUniversity staff or student login password
  - Authentication: Ensure only **"PEAP"** is selected
  - Wireless Network: Select **"CQUroam"** from the drop-down menu
  - Security Type: Choose **"WPA2 Enterprise"** (if it isn't already selected)
7. Click **'OK'** to close the window.



8. The network window should now have an entry for **"802.X1: CQUroam"**.  
Click the **'Connect'** button.



## Accessing CQUniversity Roam using Mac OS version 10.5 or 10.6 (continued)

9. Once the laptop has connected to CQUniversity Roam, students and staff should see information under the **"Connected"** field and the **"802.1X: CQURoam"** field.
10. Click **"Apply"** to close the **"System preferences..."** and save the settings.

The CQUniversity Roam (wireless) connection should now be available. To test the connection, simply open a new web browser and enter a website address such as: <http://cqunitech.cqu.edu.au>. If the CQUniTECHNOLOGY website opens, the wireless connection has been successfully established.



### Hints and Tips:

- If the *Airport wireless* card is not on, an error message will state: **"There was an error joining the selected Airport network"**.
- Once the wireless connection is established, students and staff will automatically be connected to CQUniversity Roam (the wireless network available on campus) once they restart their computers.
- If the CQUniversity login password entered during the initial setup is incorrect, students and staff will get an error stating **"802.1x authentication has failed"**.

### Need assistance accessing CQUniversity Roam?

Students and staff can contact the ITD Service Centre if they need any technical assistance accessing CQUniversity Roam while working on campus.

Phone: 07 4930 9233

Email: [servicedesk@cqu.edu.au](mailto:servicedesk@cqu.edu.au)