

Accessing Education Roam (EduRoam) using Mac OS *version 10.5 or 10.6*

| | |
|---|------|
| Requirements for using Mac OS 10.5 or Mac OS 10.6 | p. 1 |
| Instructions to access EduRoam | p. 1 |
| Hints and Tips | p. 4 |
| Assistance with EduRoam | p. 4 |

EduRoam is a service that enables CQUniversity students and staff to connect a secure wireless network while *visiting* other educational institutions around the world. This makes it possible to travel (for work or study purposes) and connect to the internet the same as if you were using [CQUniversity Roam](#) on campus.

You can find out where EduRoam is available in Australia at <http://www.eduroam.edu.au/status.html>.

Requirements

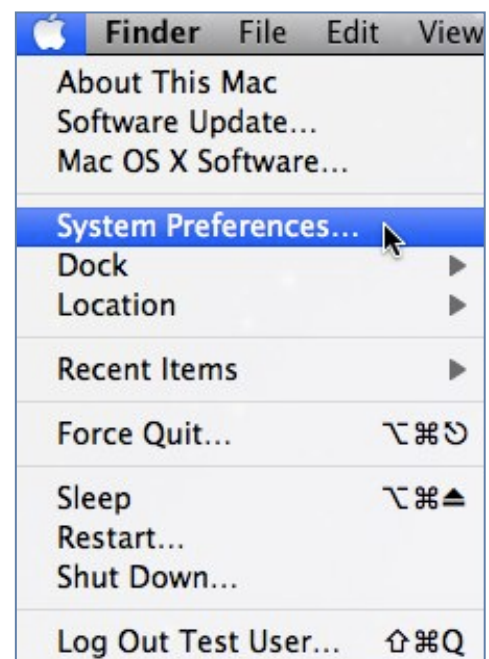
The following requirements are needed when using **Mac OS 10.5** or **Mac OS 10.6** to access EduRoam:

- Download the latest updates from the Apple website <http://support.apple.com/downloads/>
- Use a Network Airport Wireless card with the latest drivers.
EduRoam uses 802.11a/g/n (54meg, not the 108meg dual channel systems available on the market).
- Ensure the IP address is configured to use dynamic IP address allocation.
If it is set to a fixed address it will not work.

Instructions

These instructions are available to assist students and staff connecting to EduRoam using a **Mac OS 10.5** or **Mac OS 10.6** laptop. **2.**

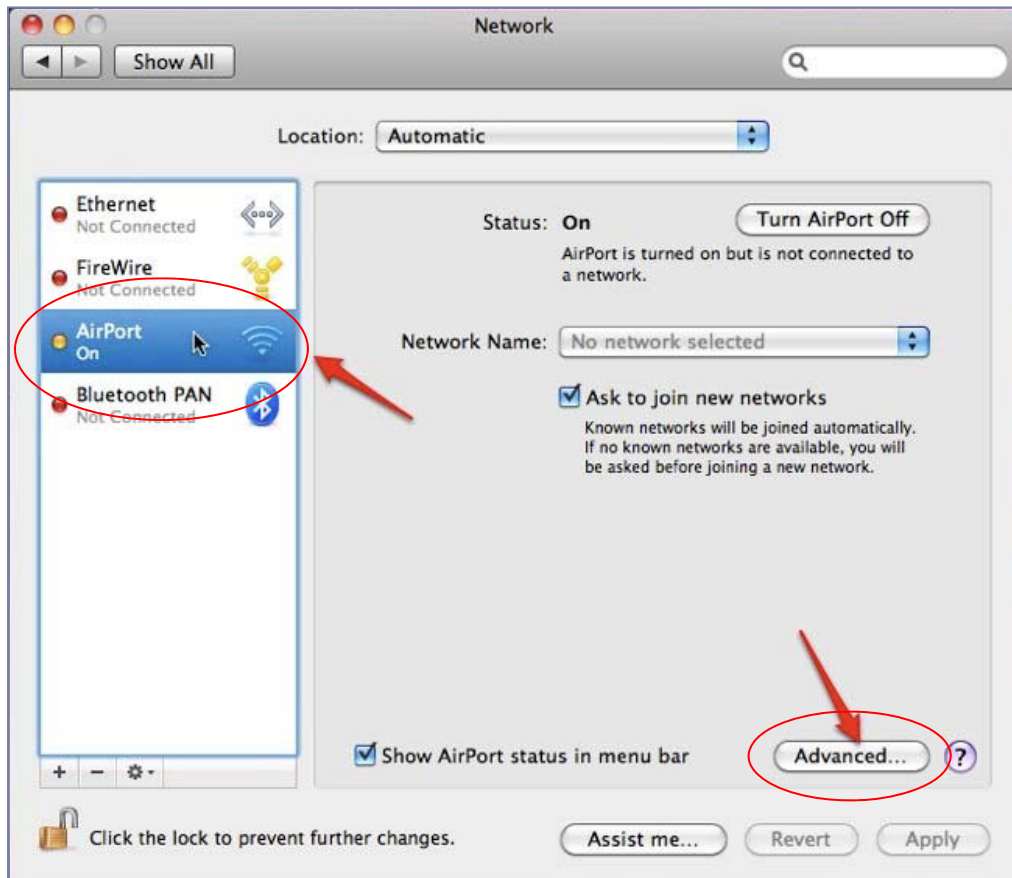
1. Click the **"Apple"** icon in the top-left corner.
2. Select the **"System Preferences..."** option.
3. Click the **"Network"** icon (pictured below).



Accessing EduRoam using Mac OS version 10.5 or 10.6 (continued)

4. A new **“Network”** window will open.

Select the **“AirPort”** option and click the **“Advanced...”** tab (pictured below).



5. Select the **“802.1X”** tab.

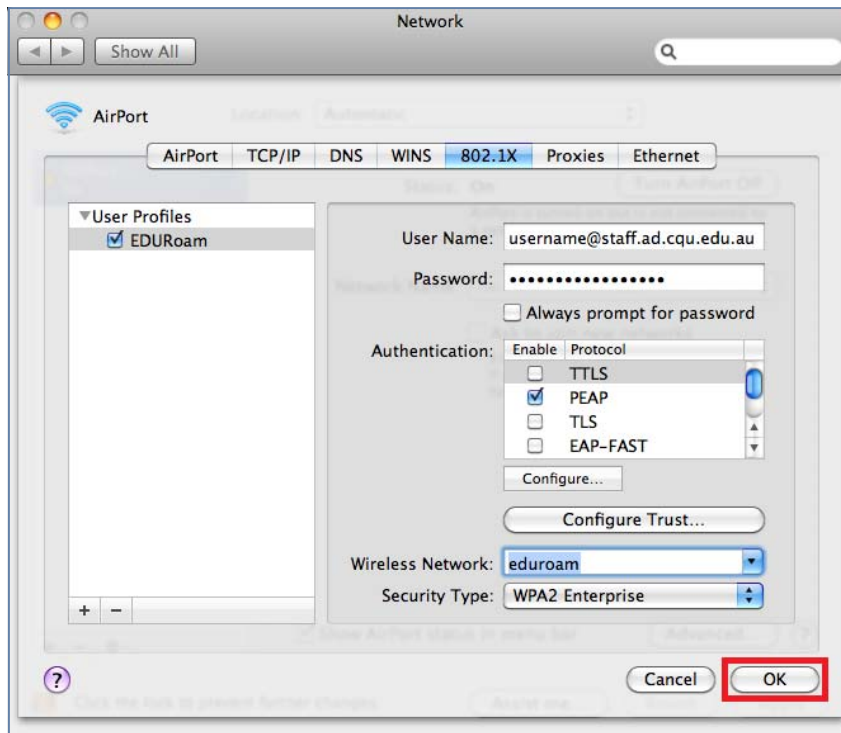
Click the plus “+” symbol on the bottom left.

A new menu will open. Select **“Add User Profile”** (pictured below).

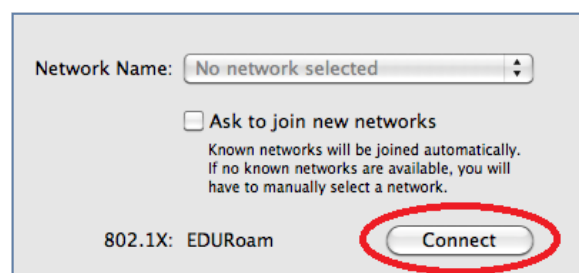


Accessing EduRoam using Mac OS version 10.5 or 10.6 (continued)

6. Please complete the following fields with the necessary information:
 - Enter **"EDURoam"** as the profile name
 - User Name: *In the username field, please enter your CQUniversity staff or student user name followed by:*
 "**@staff.ad.cqu.edu.au**" or
 "**@student.ad.cqu.edu.au**" (whichever option is relevant).
 - Password: Enter your CQUniversity staff or student login password
 - Authentication: Ensure only **"PEAP"** is selected
 - Wireless Network: Select **"eduroam"** from the drop-down menu
 - Security Type: Choose **"WPA2 Enterprise"** (if it isn't already selected)
7. Click **'OK'** to close the window.



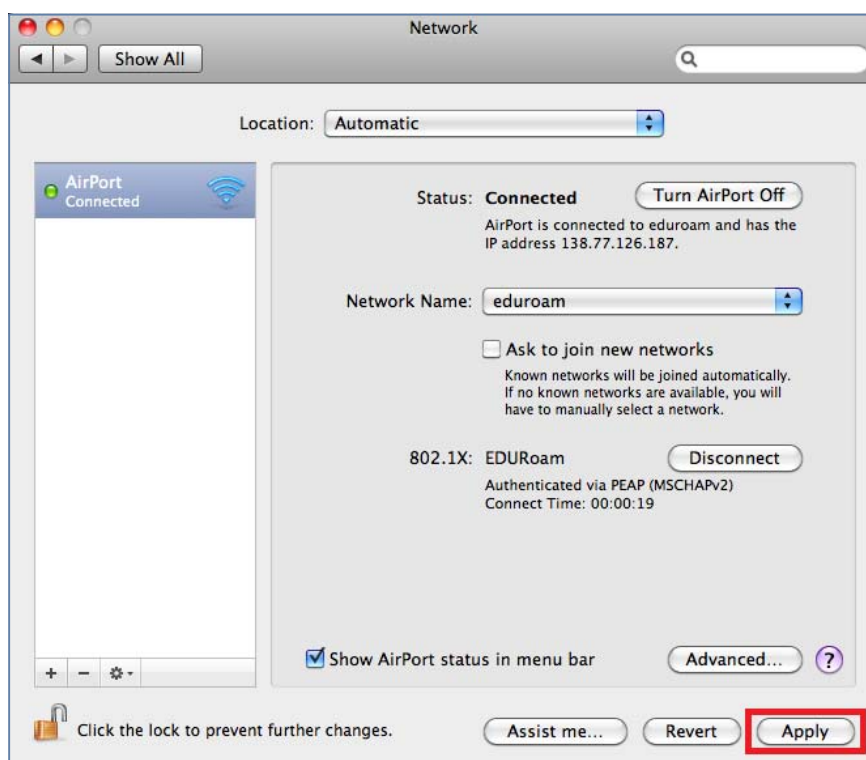
8. The network window should now have an entry for **"802.X1: EDURoam"**.
Click the **"Connect"** button.



Accessing EduRoam using Mac OS version 10.5 or 10.6 (continued)

9. Once the laptop has connected to EduRoam, students and staff should see information under the **"Connected"** field and the **"802.1X: EDUROam"** field.
10. Click **"Apply"** to close the **"System preferences..."** and save the settings.

The EduRoam (wireless) connection should now be available. To test the connection, simply open a new web browser and enter a website address such as: <http://cqunitech.cqu.edu.au>. If the CQUniTECHNOLOGY website opens, the wireless connection has been successfully established.



Hints and Tips:

- If the *Airport wireless* card is not on, an error message will state: **"There was an error joining the selected Airport network"**.
- Once the wireless connection is established, students and staff will automatically be connected to EduRoam (the wireless network available on campus) once they restart their computers.
- If the CQUniversity login password entered during the initial setup is incorrect, students and staff will get an error stating **"802.1x authentication has failed"**.

Need assistance accessing EduRoam?

Students and staff can contact the ITD Service Centre if they need any technical assistance accessing EduRoam while working on campus.

Phone: 07 4930 9233

Email: servicedesk@cqu.edu.au